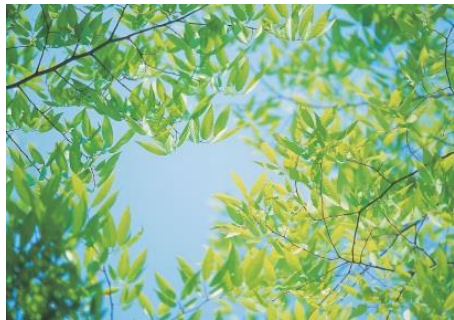


Concept of Capacity Development Program under AP-PLAT



Tetsuo Kuyama

AP-PLAT Capacity Building Coordination Office/
Director of Bangkok Regional Center
Institute for Global Environmental Strategies (IGES)



AP-PLAT
Asia-Pacific Climate Change Adaptation Information Platform



Santa Rosa/Philippines (Photos: E. C. Creencia)

Bangkok/Thailand

Launching of AP-PLAT

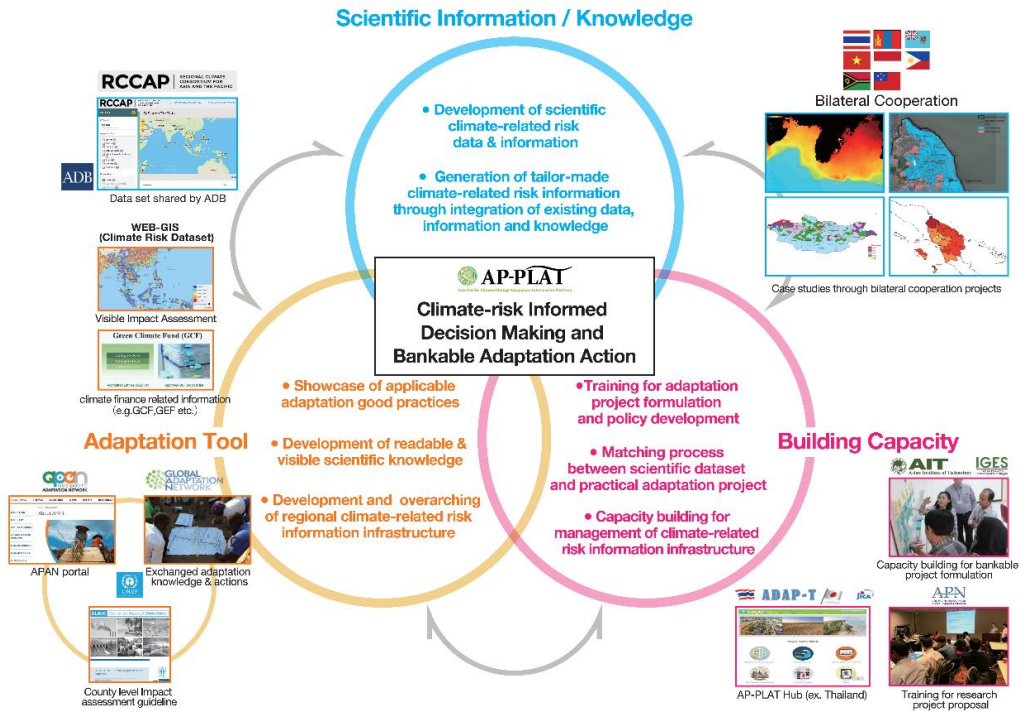


AP-PLAT was established on 16th June, 2019 during a G20 Ministerial Meeting, to share climate risk and adaptation information online with stakeholders.

Mission

Enabling environment for **climate-risk informed decision making** and **practical adaptation action**

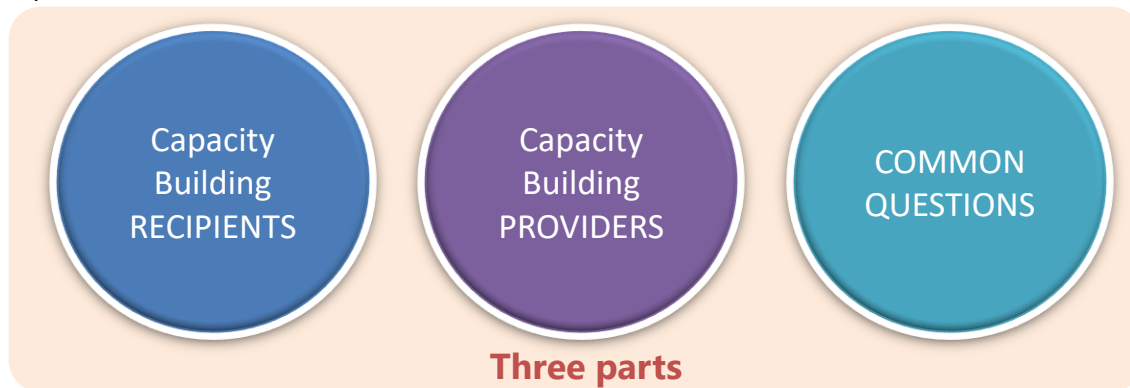
Core Pillars of Activities



Survey of Existing Training Programs on Adaptation

Objective

To understand the effectiveness of capacity building activities and programs in fulfilling on-the-ground adaptation needs and enhancing climate actions;

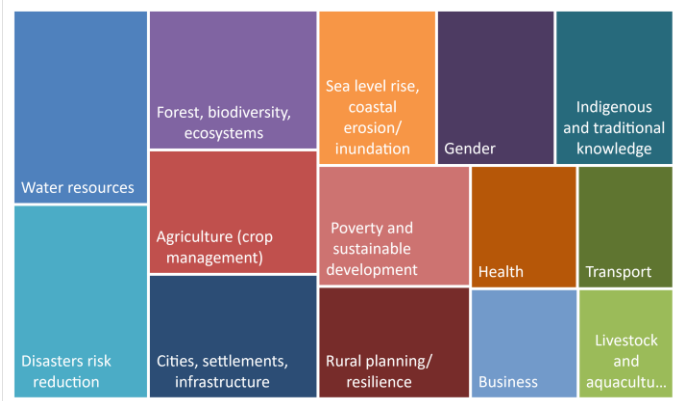
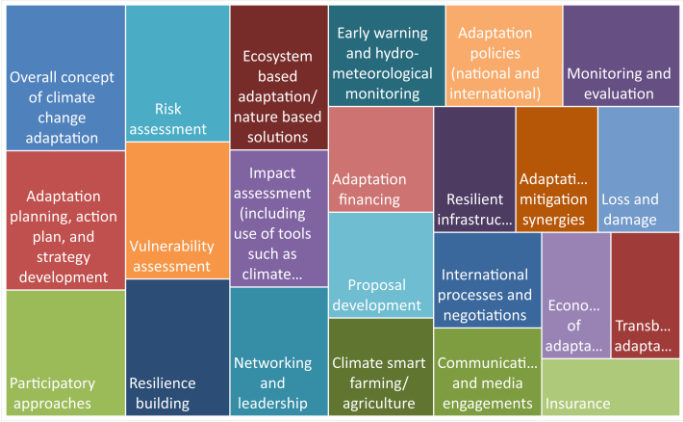


Respondents

Focused survey targeting regional institutes, government, experts, university, and potential recipients (government, youth, students, community leaders, NGOs etc). Nearly 200 questionnaires sent through Survey Monkey, 90 responses and counting. Questionnaire survey will continue, and we hope to reach about 500 responses in the next 3-4 months.

Subject matter/sector/topics of training programs surveyed

Providers' expertise

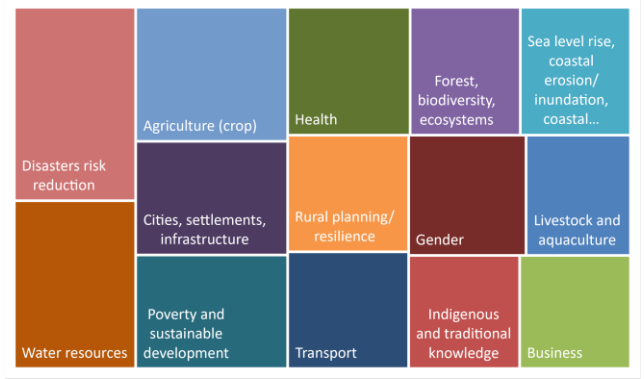


Recipients

Specific topics



Sectors



Expectations, lessons learned, and action taken afterwards

Expectations from Capacity Building



Lessons learned

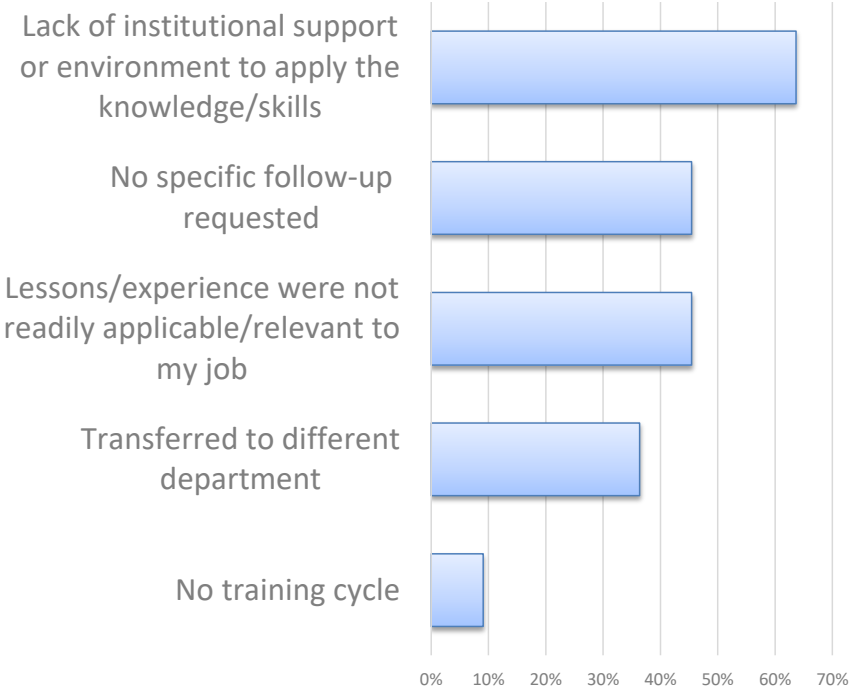


Actions taken after Capacity Building



Reasons for not taking any action after attending training

Why is follow-up often difficult?



Why is mentoring support usually not available?



Common weakness of capacity building and ways to overcome them

Capacity building	Drawbacks/Weakness	Ways to overcome
Design, Approach, Types	No training cycle , background of trainer/trainees, lack of training needs assessments , designed by foreign consultants, lack post project continuity , short and too intensive, too long (>week), lack integrated approach , too much classroom/in-house types, no system-based approach, irregular project-based trainings/workshops	Successful cases , best practices, specific and less intensive , online evaluation, prior engagements , monitoring, spread out training, post-training component , led by local facilitator, hands-on, peer to peer learning , field-based training
Subject matter coverage	Too theoretical/general/broad , shallow subject matter, lack of trainers , lack of easy to read materials	Enhance training of trainers , simple language
Participants	Not enough participants, continuity of participants , participants too busy , participants' background, difficulty to reach right participants, communication , knowledge gap	Regular check, eligibility criteria , regular program for participants, tracing participants
Tools and resources	ICT equipment, resource intensive , resources for field work	Investment on tools/equipment, scholarships , funds for field work
Output, Outcomes, Impacts, Follow-up	Lack M&E methods , government involvement/policy, no follow-up , lack indicators of success, no metrics for long-term impacts	Tracing participants , maintain a referral system, improve monitoring

Observations of existing training programs on adaptation

- Different types of training programs **already exist** for diverse targeted groups and are implemented by several organizations in the Asia-Pacific region.
- To produce **more effective impact**, a platform is needed to enable these diverse training institutions to implement **knowledge/tool sharing, mutual collaboration, and follow-up support**.

Concept of AP-PLAT Capacity Development Program (draft)

- The Program will be launched as a **network activity** by institutions in the Asia-Pacific region which agree with the overall concept of AP-PLAT as well as **voluntarily participating** in its activities.
- The Program is not only to **provide opportunities for collaboration** but also to enable enhanced **implementation of science-based policies, activities, and on-the-ground adaptation projects** in the Asia-Pacific region.

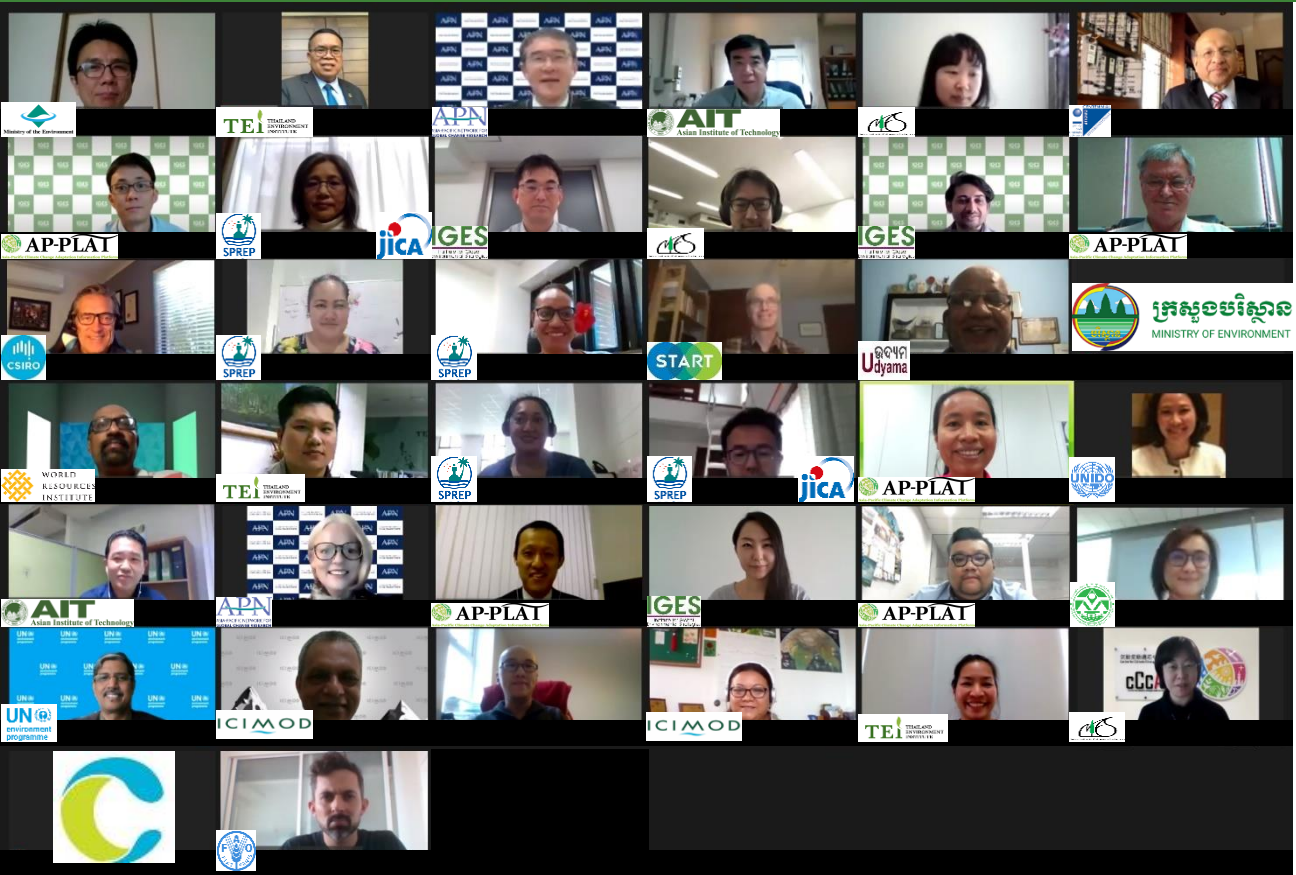
Concept of AP-PLAT Capacity Development Program (draft)

- Activities under the Program are **to be designed based on discussions** among the partner institutions
- IGES as the **Coordination Office** will do its best to make the identified priority actions happen
- Focus is to generate **added value through collaboration and partnership** among partner institutions for better adaptation in Asia-Pacific

6 Major Activities

1. **Networking** of capacity strengthening institutions;
2. Development of **Knowledge Products** and their sharing;
3. **Collaboration** with existing training programs and implementation of **Supporting Activities**;
4. Establishment of **a New Fund** to facilitate capacity building;
5. Launching **Thematic Capacity Building Courses**; and
6. Promoting **Bottom-up** CC adaptation actions.

Preparatory Workshop for this program



Virtual Workshop
on 5 March 2021 involving
40 experts from diverse
organizations dealing with
capacity development on
adaptation

Comments/Suggestions from Participants and Next Step

Comments/Suggestions

- Evaluation and monitoring of existing training programs are essential to improve the regional system of capacity development on adaption.
- Mutual collaboration and knowledge sharing among organizations regionally can improve the effectiveness of individual activities of each organization
- Sustainable management/funding system of proposed program is a key for its long-term operation

Next Steps

- Elaboration of the Concept based on the comments/suggestions in the Workshop
- Consultation with key partners (Advisory Board Meeting) for preparation of a basic document for this network as well as finalization of a Long-term Activity Plan

Thank You



AP-PLAT

Asia-Pacific Climate Change Adaptation Information Platform