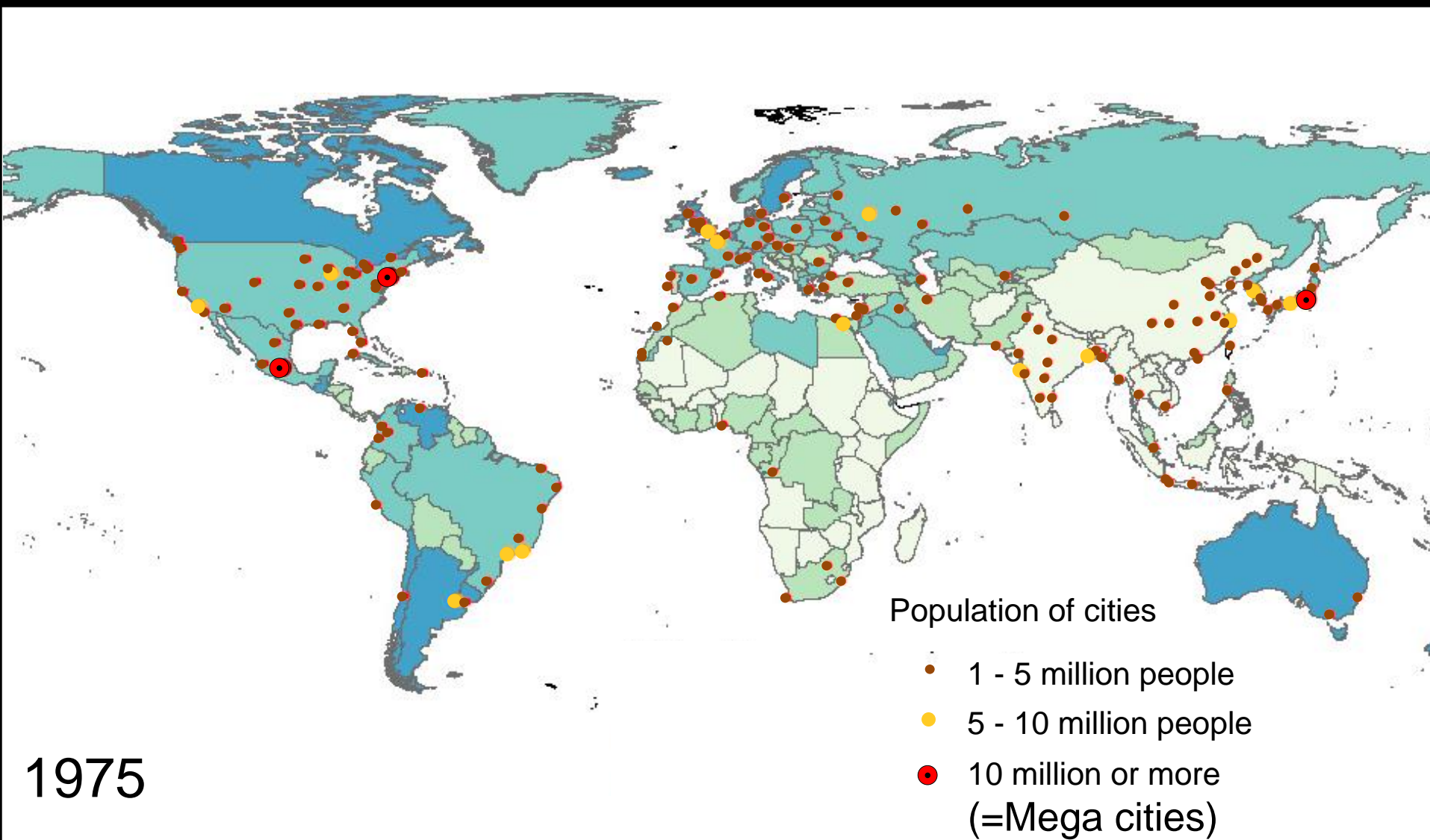




Localisation of the SDGs at the City Level

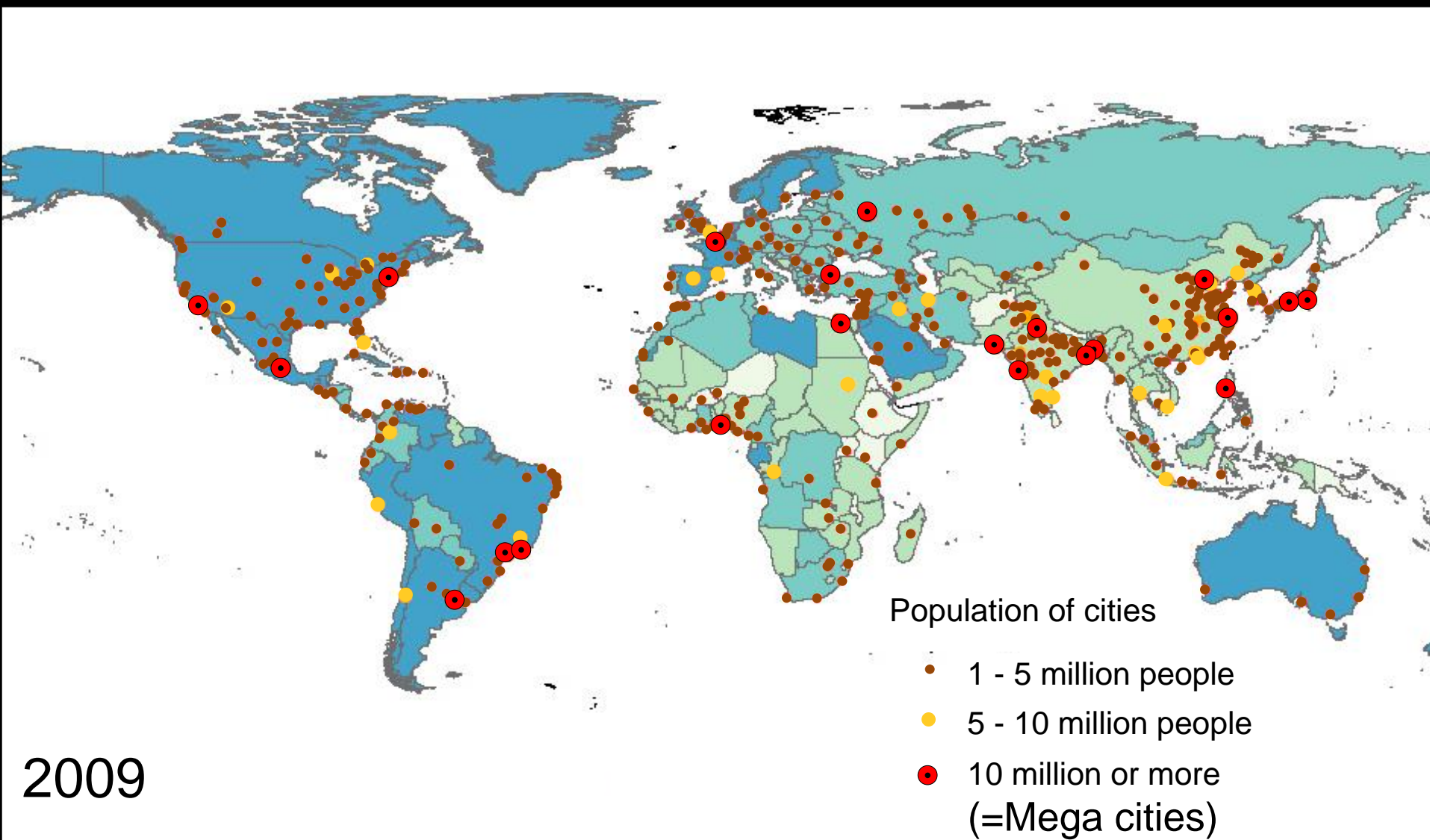
**Shun Kawakubo
Associate Professor
Hosei University, Japan**

Background: The 21st century is the era of cities



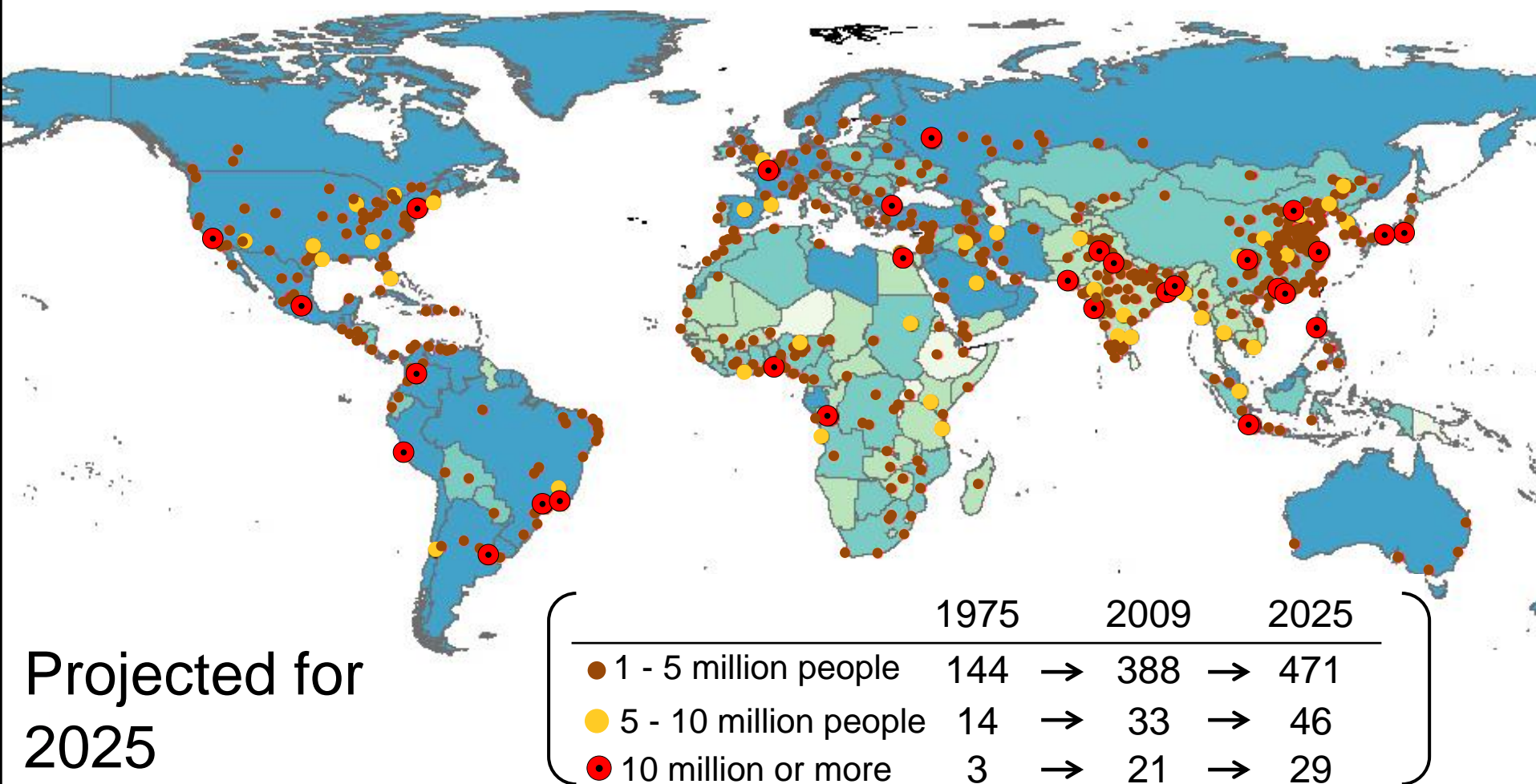
Source: United Nations, World Urbanization Prospects, The 2009 Revision, 2010

Background: The 21st century is the era of cities



Source: United Nations, World Urbanization Prospects, The 2009 Revision, 2010

Background: The 21st century is the era of cities



► Many people live in cities **(21st century = the era of cities)**

Source: United Nations, World Urbanization Prospects, The 2009 Revision, 2010

Goal 11: Sustainable cities and communities

Thematic goals (Target 11.1-11.7)

11.1 Housing

11.2 Transport

11.3 Planning

11.4 Heritage

11.5 Vulnerability

11.6 Environment

11.7 Public spaces

11 SUSTAINABLE CITIES
AND COMMUNITIES



Means of implementation (Target 11.a-11.c)

11.A Urban-rural relations

11.b Integrated policies

11.c Governmental Capacities

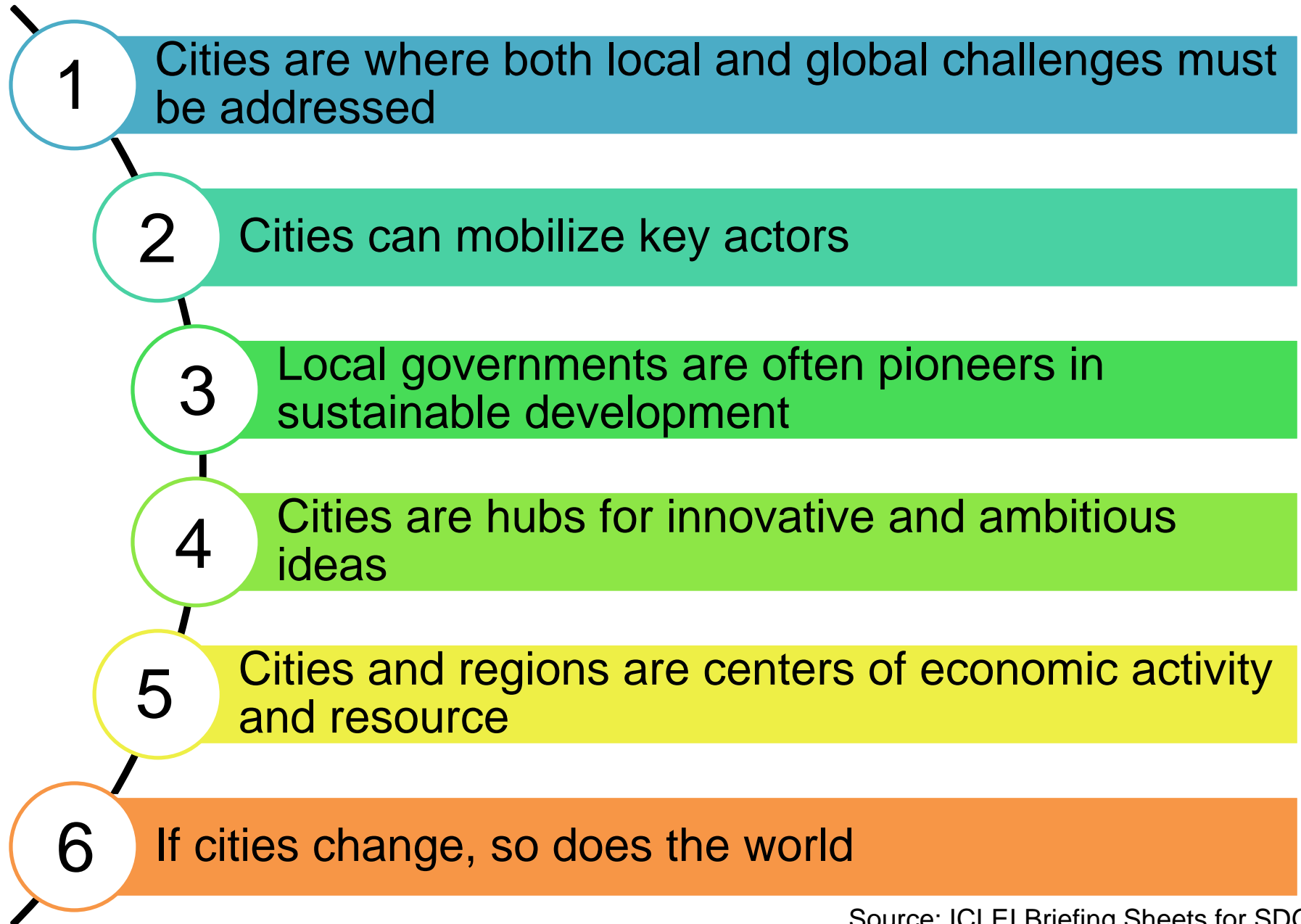
The SDGs have recognized the transformative power of urbanization with a dedicated goal (Goal 11) focused on cities and human settlements

- ▶ However, the scope of achievements by local governments is not necessarily limited to Goal 11. It is obvious that they also need to take responsibility for making contributions to the other 16 Goals.

Reference: ICLEI Briefing Sheets (<http://www.iclei.org/briefingsheets.html>)



How can city-level actors help make the SDGs a success?



Source: ICLEI Briefing Sheets for SDGs

A Territorial Approach to the SDGs by OECD



► Cities around the world are moving forward to achieve SDGs

SDGs Future City Initiative led by Japanese Governments

Green: Top 10 SDGs Future Cities

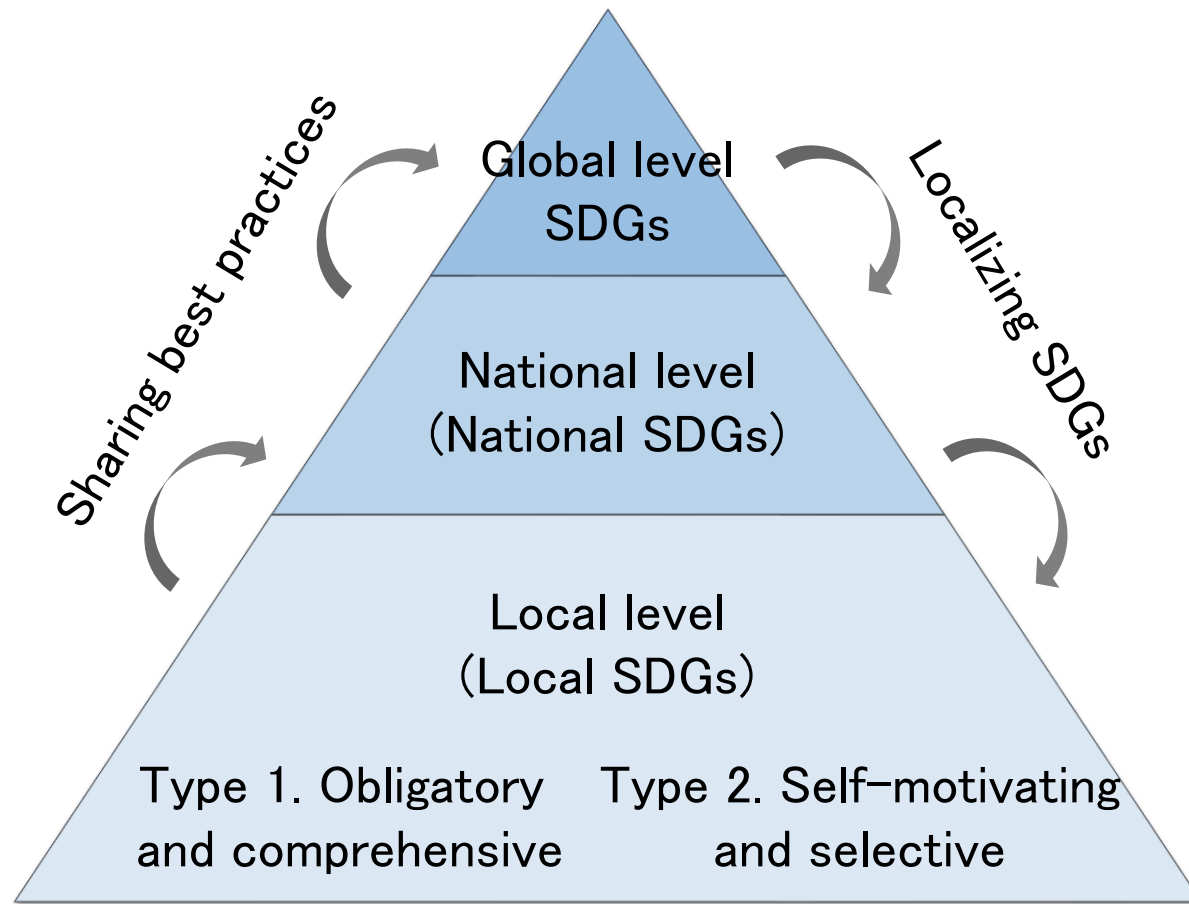
Blue: Other SDGs Future Cities



► Total 60 cities proposing outstanding initiatives were selected as SDGs Future City by Japanese Government as of July 2019.

Reference: <https://www.kantei.go.jp/jp/singi/tiiki/kankyo/teian/pdf/result01.pdf> Note: above 29 cities are the selected cities in 2018

Framework for implementing SDGs at local level (localization)



- Sep. 2015
Adoption of the 2030 agenda
- Dec. 2016
SDGs Implementation Guiding Principles (Case of Japan)
- Jun. 2018
First selection of SDGs Future cities (Case of Japan)

► Supporting local governments in implementing SDGs at local level considering their own conditions and resources is important

Confronting challenges when localizing SDGs

Some challenges exist when localizing the SDGs
For example...

Goal 1

End poverty in all its forms everywhere



Target 1.1

By 2030, eradicate extreme poverty for all people everywhere, currently measured as people living on less than \$1.25 a day

Indicator 1.1.1

Proportion of population below the international poverty line, by sex, age, employment status and geographical location (urban/rural)

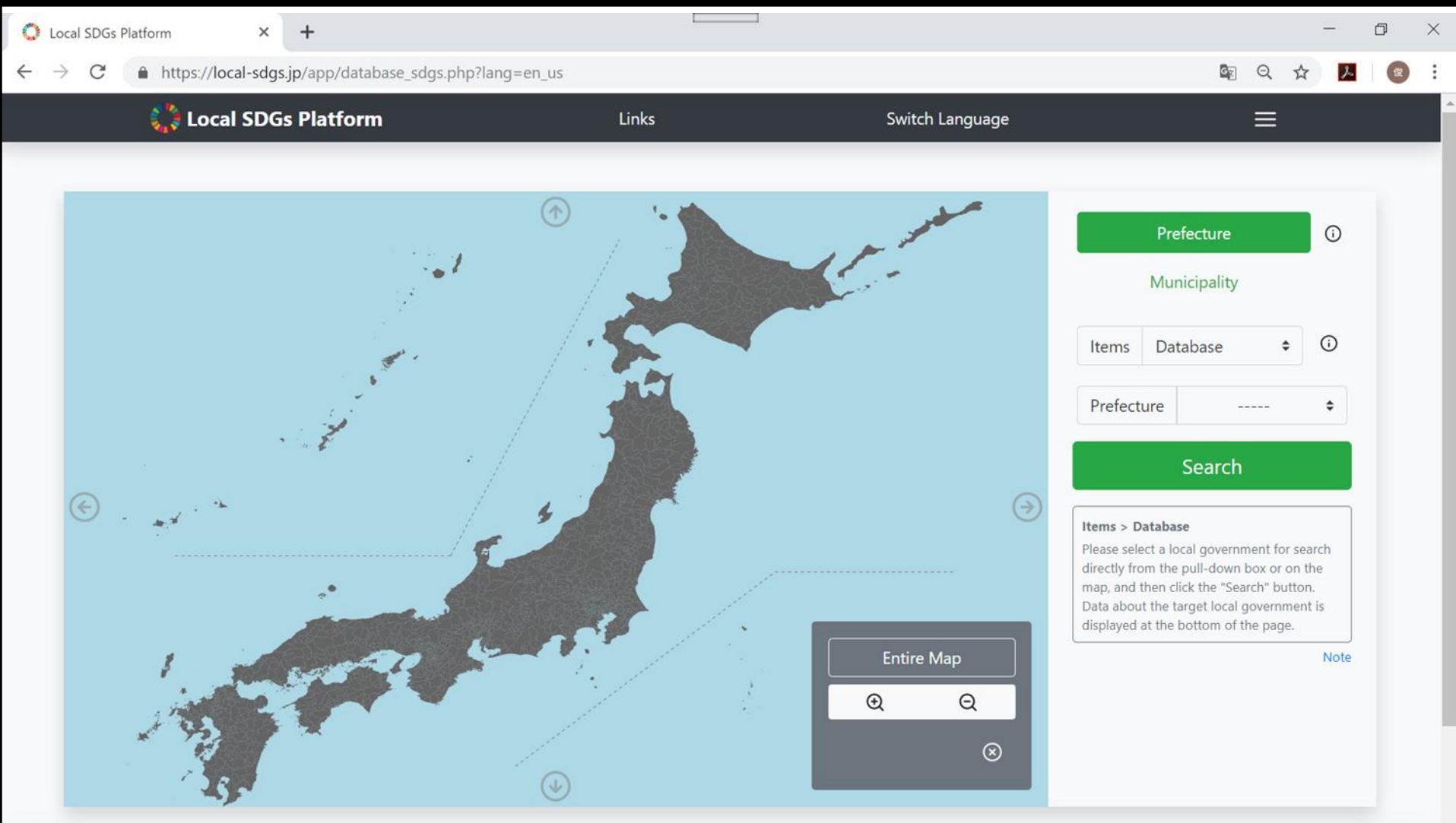
- ▶ Some targets and indicators don't reflect local context of each country.
- ▶ Supplemental targets and indicators or slightly modified targets and indicators are required

Local SDGs Platform (<https://local-sdgs.jp/>)



- ▶ A platform to register, search, share SDGs initiatives and activities led by local governments in Japan

Local SDGs Platform (<https://local-sdgs.jp/>)



- ▶ A platform to register, search, share SDGs initiatives and activities led by local governments in Japan

Local SDGs Platform (<https://local-sdgs.jp/>)

The screenshot displays the Local SDGs Platform interface. On the left, a map of Japan highlights Hokkaido. In the center, a radar chart shows the progress of Sapporo City across 17 SDG goals. The chart has 17 axes, each labeled with a goal number (GOAL1 to GOAL17). The radial scale ranges from 0 to 100, with concentric circles at 25, 50, 75, and 100. The data points for Sapporo City are connected by a blue line, showing varying levels of achievement across the goals. On the right, a search panel allows users to select a Prefecture (HOKKAIDO) and a Municipality (Sapporo-City) before clicking the 'Search' button. Below the search panel, a note explains the search process.

Local SDGs Platform

Links

Switch Language

Prefecture

Municipality

Items Database

Prefecture HOKKAIDO

Municipality Sapporo-City

Search

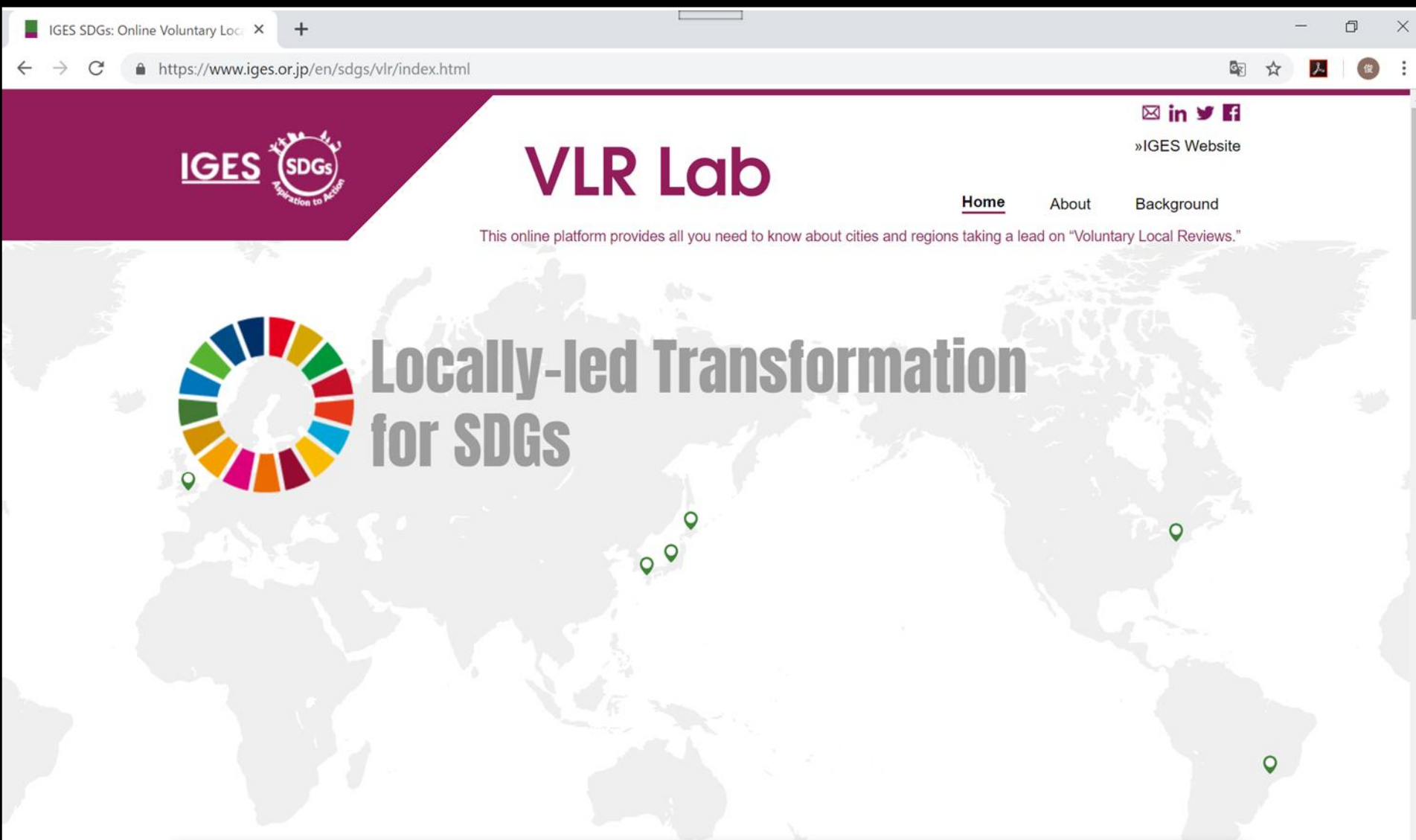
Items > Database

Please select a local government for search directly from the pull-down box or on the map, and then click the "Search" button. Data about the target local government is displayed at the bottom of the page.

Note

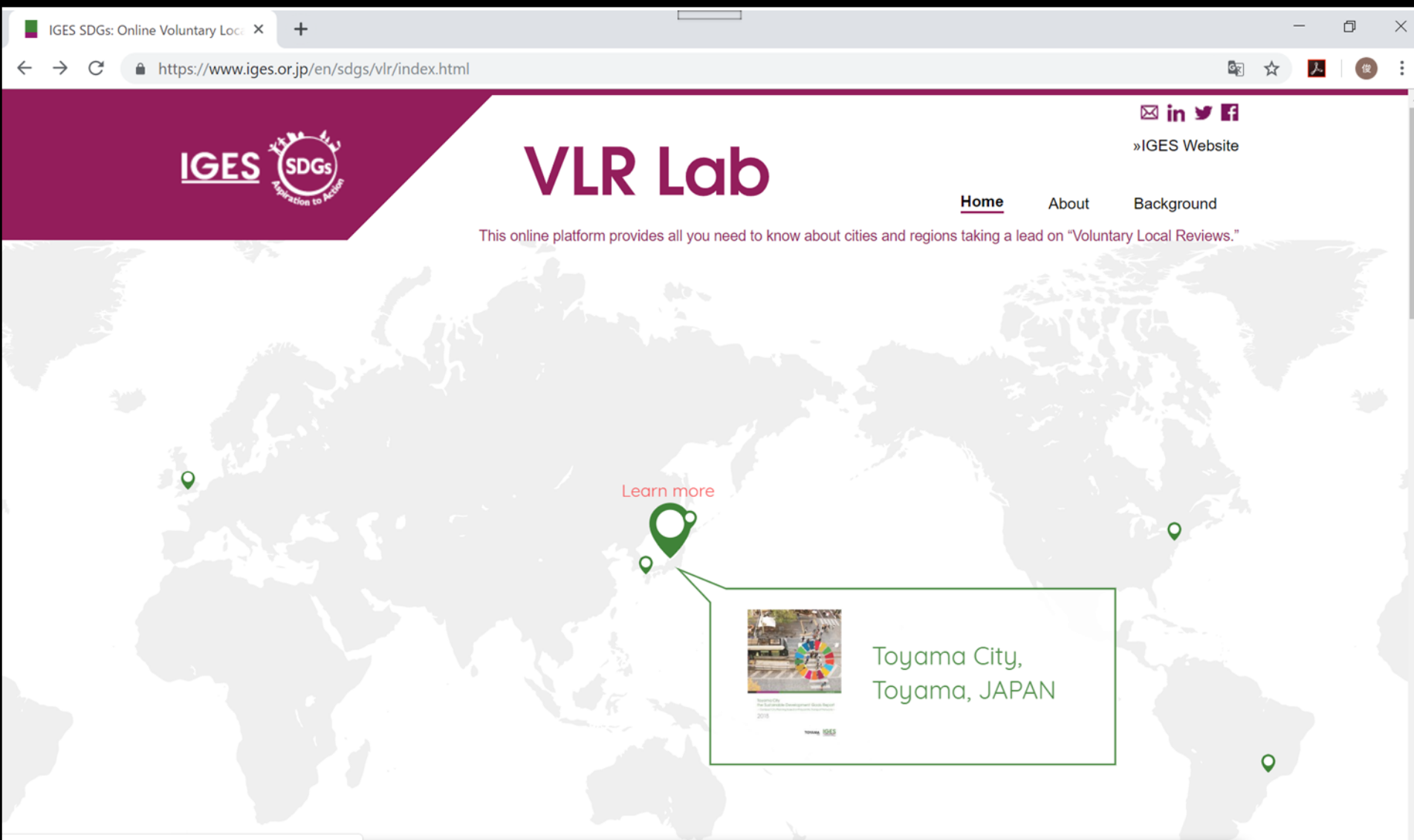
- ▶ A platform to register, search, share SDGs initiatives and activities led by local governments in Japan

VLR Lab (<https://www.iges.or.jp/en/sdgs/vlr/index.html>)



- ▶ A website to support Voluntary Local Review (VLR)
(Collaboration between VLR Lab and Local SDGs Platform is being considered now)

VLR Lab (<https://www.iges.or.jp/en/sdgs/vlr/index.html>)



- ▶ A website to support Voluntary Local Review (VLR)
(Collaboration between VLR Lab and Local SDGs Platform is being considered now)

VLR Lab (<https://www.iges.or.jp/en/sdgs/vlr/index.html>)

The screenshot shows the VLR Lab website for Toyama City. The header features the IGES logo and the text 'VLR Lab'. The main content area is titled 'Toyama City, Toyama Prefecture' and includes a subtitle: '“Toyama City the Sustainable Development Goals Report – Compact City Planning based on Polycentric Transport Networks”'. A map of Toyama City is displayed, showing the city's location within Toyama Prefecture. Below the map, a table provides key statistics for Toyama City as of January 2017.

Population	Area	Population Density
418,304 (Jan. 2017)	1,242 km ² (Jan. 2017)	337 per km ² (Jan. 2017)

Insights of the Report

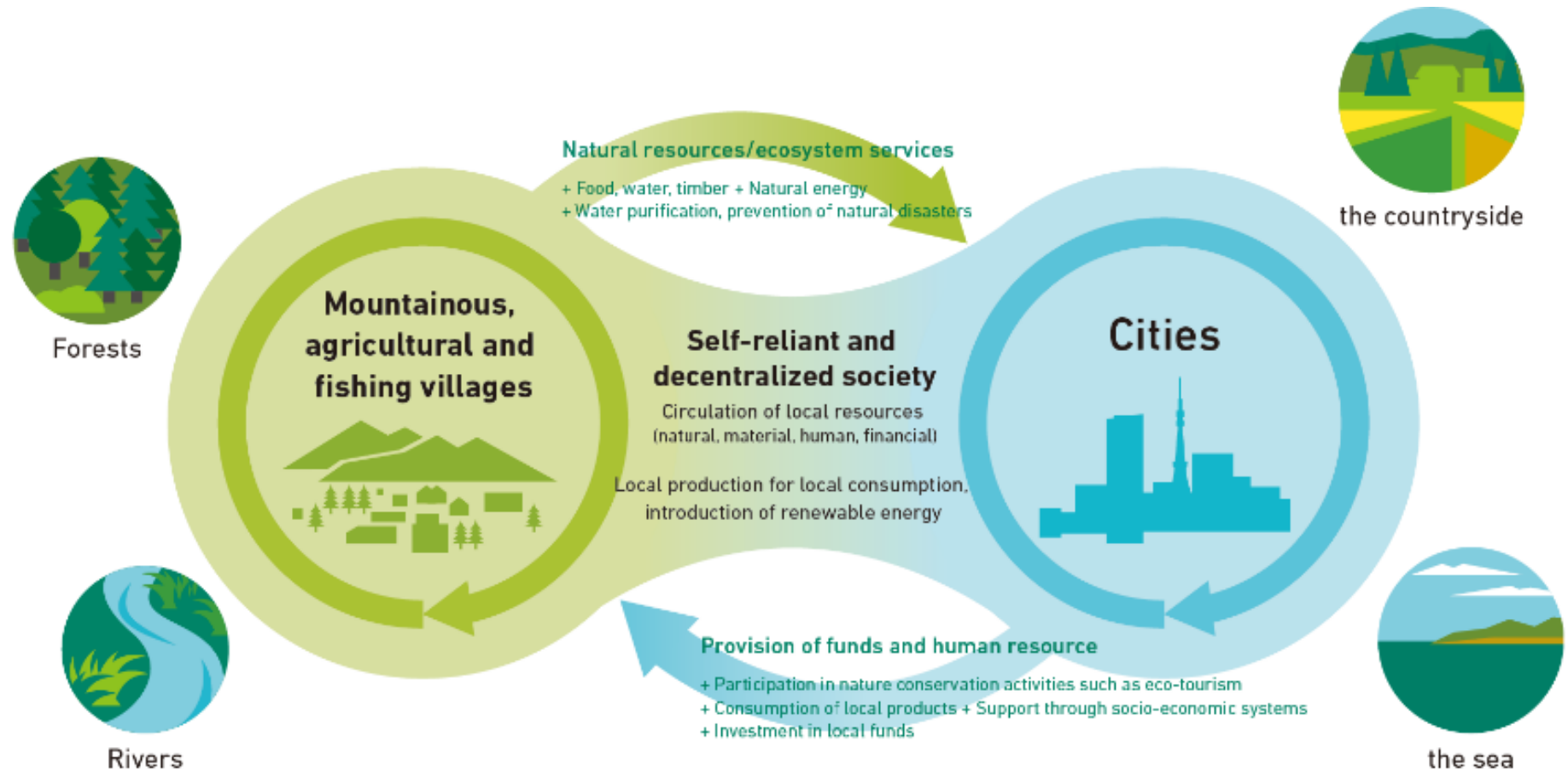
This report uses the UN Secretary-General Guideline for Voluntary National Reviews as its framework. The city has a framework of

► A website to support Voluntary Local Review (VLR)
(Collaboration between VLR Lab and Local SDGs Platform is being considered now)

Conclusion: Creation of sustainable cities having SDGs in view

Cities = **“Systems of Systems”** made up of wide-ranging systems

► Intersystem cooperation and integration are strongly required



Source : Ministry of the Environment

► An ideal vision: **Regional Circular and Ecological Sphere (CES)**

Thank you very much

Acknowledgements:

This research was supported by the Environment Research and Technology Development Fund (No.1RF-1701) of the Environmental Restoration and Conservation Agency.

Contact information:

Shun Kawakubo, Dr. Eng. Associate Professor,
Faculty of Engineering & Design, Hosei University
2-33, Ichigayatamachi, Shinjuku, Tokyo, 162-0843 Japan
Tel: +81-3-5228-1497, FAX: +81-3-5228-1405
E-mail: kawakubo@hosei.ac.jp,
Website: <https://kawakubo-lab.ws.hosei.ac.jp/index.html>



Kawakubo Laboratory is conducting researches that contribute to the achievement of SDGs

