

Participatory Forest Management and Land Use Planning in Lao PDR

**Presenter: Dr. Jintana Kawasaki, Policy Researcher, IGES Natural
Resources Management Group, Forest Conservation Team**

**2014 Project Meeting “Forest Conservation and Potential of Agricultural Land Use for Biofuel Expansion”
28 November, 2014, Savannakhet University, Savannakhet, Lao PDR**

Contents

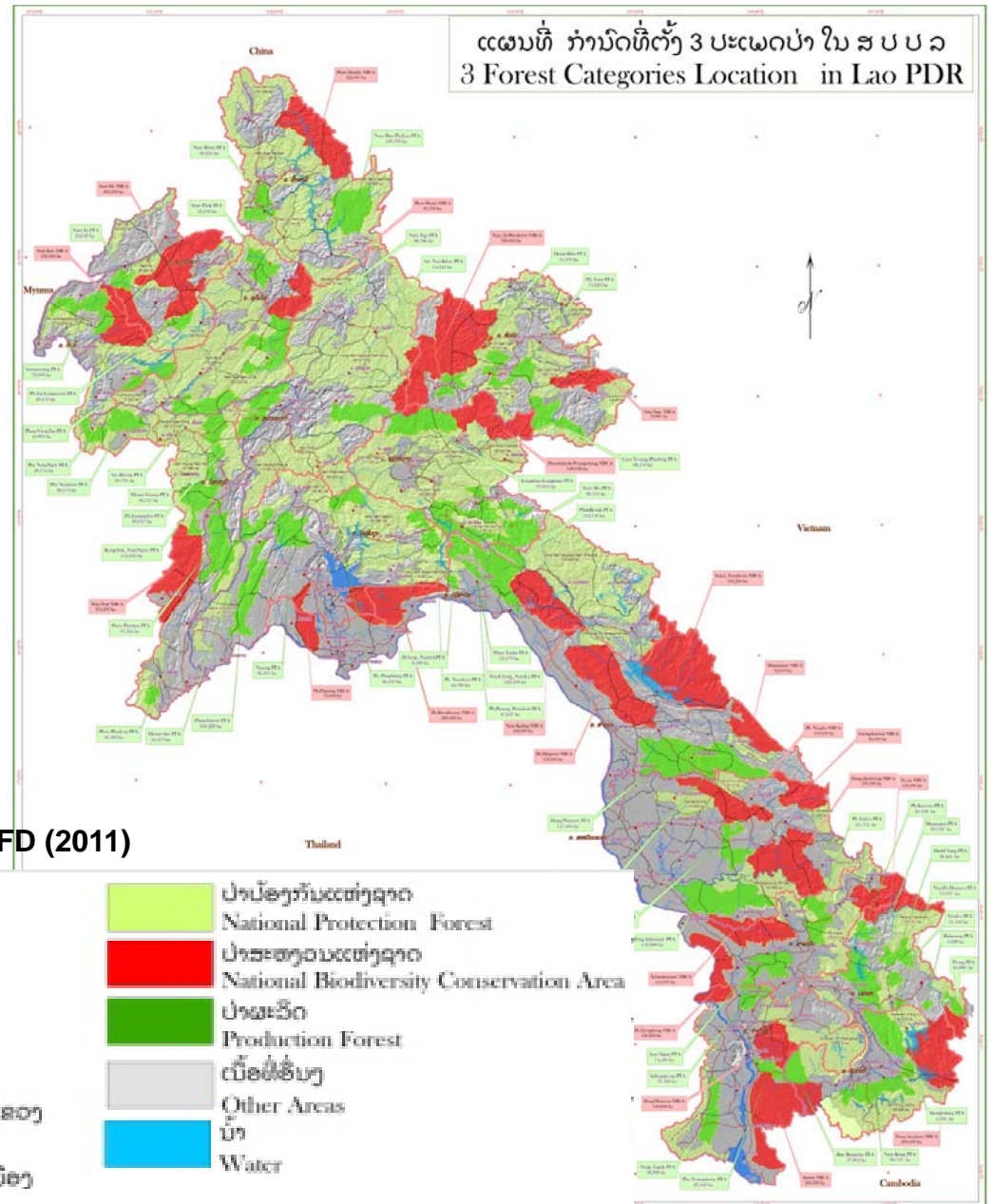
- Forest and Land Use in Lao PDR
- Causes of Deforestation and land Use Change
- Participatory Forest Management
- Introduction to REDD+ and JCM
- IGES Research on Suitable Land Use Planning and Forest Conservation

I. Forest and Land Use in Lao PDR

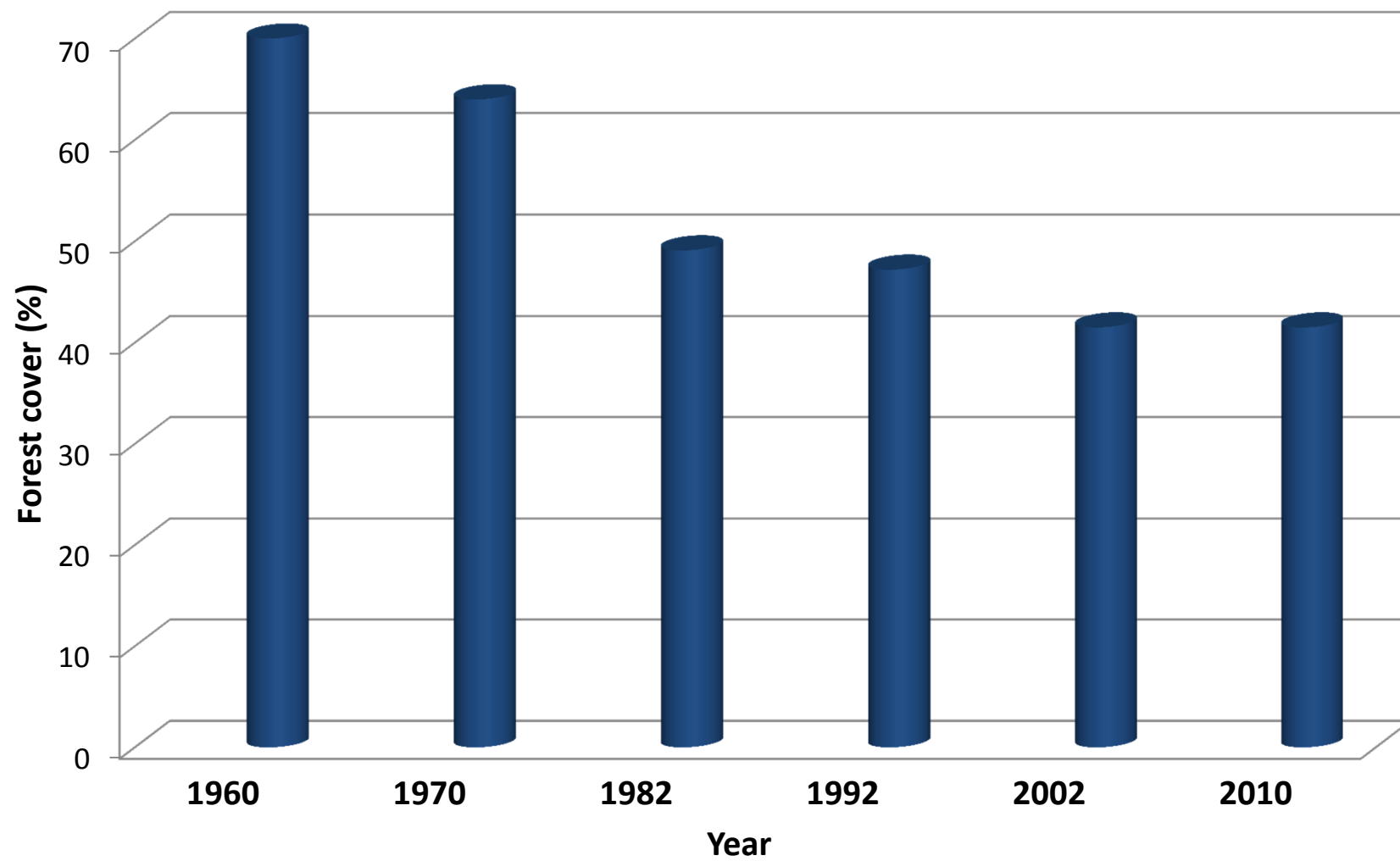
Total conservation forest area of about 3.8 million ha

Total protection forest area of about 7.5 million ha

Total production forest area of about 3.1 million ha



Total Forest Areas in Lao PDR



II. Causes of Deforestation and Land Use Change

- Illegal logging
- Pioneer shifting cultivation
- Timber harvesting by rural households
- Agricultural expansions by individual farmers, commercial companies, industrial tree plantation
- Infrastructure and urban development

Shifting Cultivation System



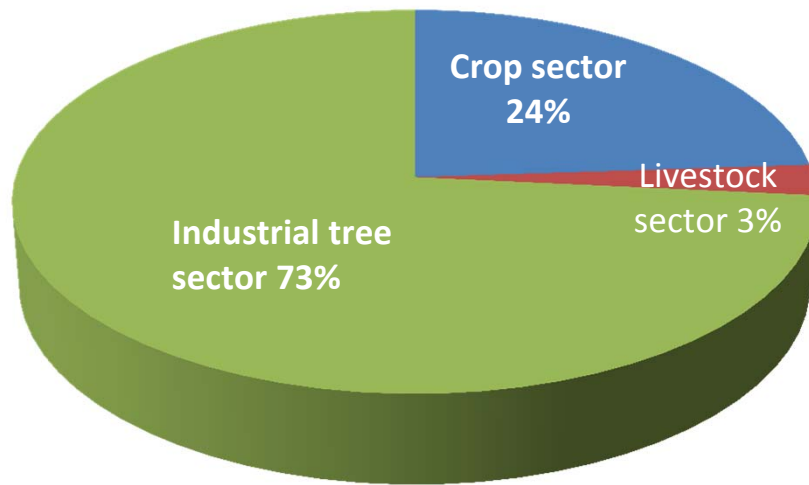
Fallow period



After slashing and burning

Total Value of Agricultural Investment

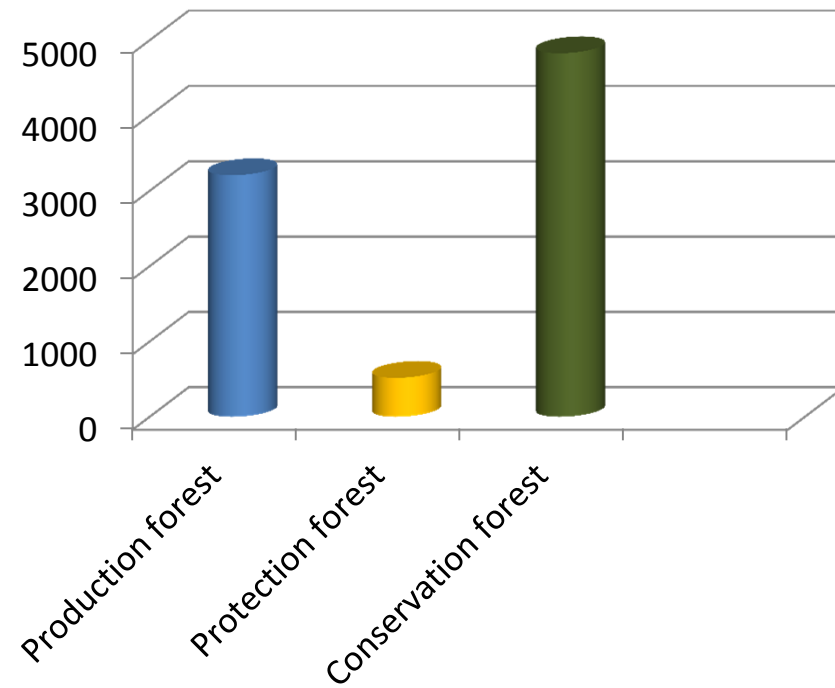
Total investment (million US)



Source: MAF (2010)

Area of Production, Protection and Conservation Forest

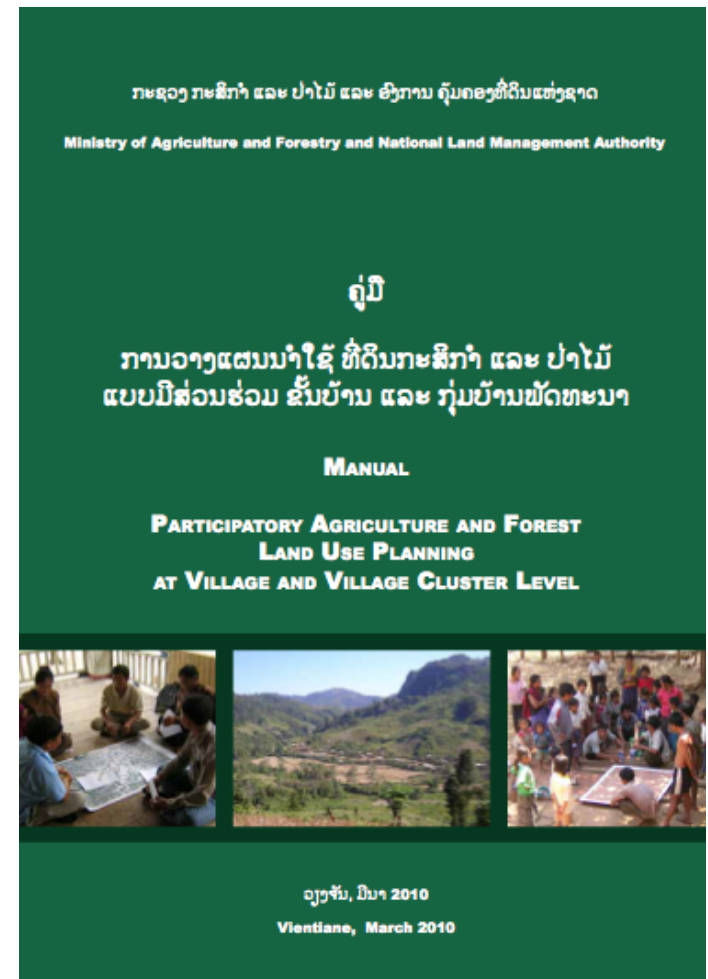
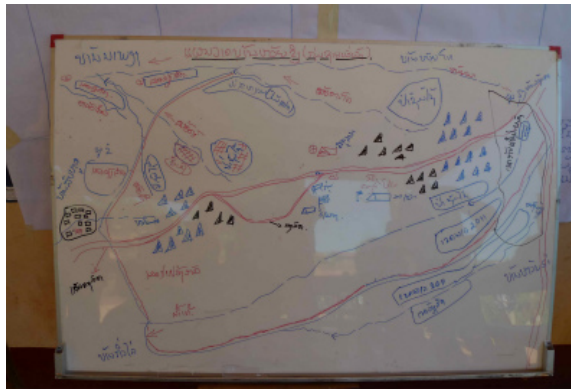
Total area (1,000 ha)



III. Participatory Forest Management

Community is a key actor in forest management and conservation

- Government of Lao PDR has promoted **community participation of reforestation activities** since 2010
- Manual on **participatory land use planning** developed by MAF in 2010



IV. Introduction to REDD+ and JCM

- REDD+ is 1) important measure for **GHG emission reduction**; 2) highly valuable for both **sustainable forest management and livelihood improvement** for forest-dependent people.
- Laos has been making considerable efforts in **preparing REDD+** since 2008
- The Forest Carbon Partnership Facility (FCPF) approved **Lao Readiness Preparation Proposal (R-PP)** in November 2010



The World Bank does not guarantee the accuracy of the data included in the Readiness Preparation Proposals (R-PPs) submitted by REDD Country Participants and accepts no responsibility whatsoever for any consequence of their use. The boundaries, colors, denominations, and other information shown on any map in the R-PPs do not imply on the part of the World Bank any judgment on the legal status of any territory or the endorsement or acceptance of such boundaries.

Forest Carbon Partnership Facility (FCPF)

Readiness Preparation Proposal (R-PP)

Lao P.D.R.

Date Submitted: December 21 2010

REDD+ Readiness Elements

International level

UNFCCC
COP's
Decisions on
REDD+

Multilateral
and
bilateral
support



National REDD+ System

- REDD+ institutional frameworks
- REDD+ national strategy or action plan
- National forest monitoring system and MRV
- Reference emissions level (REL)
- REDD+ safeguards and SIS
- REDD+ demonstration activities



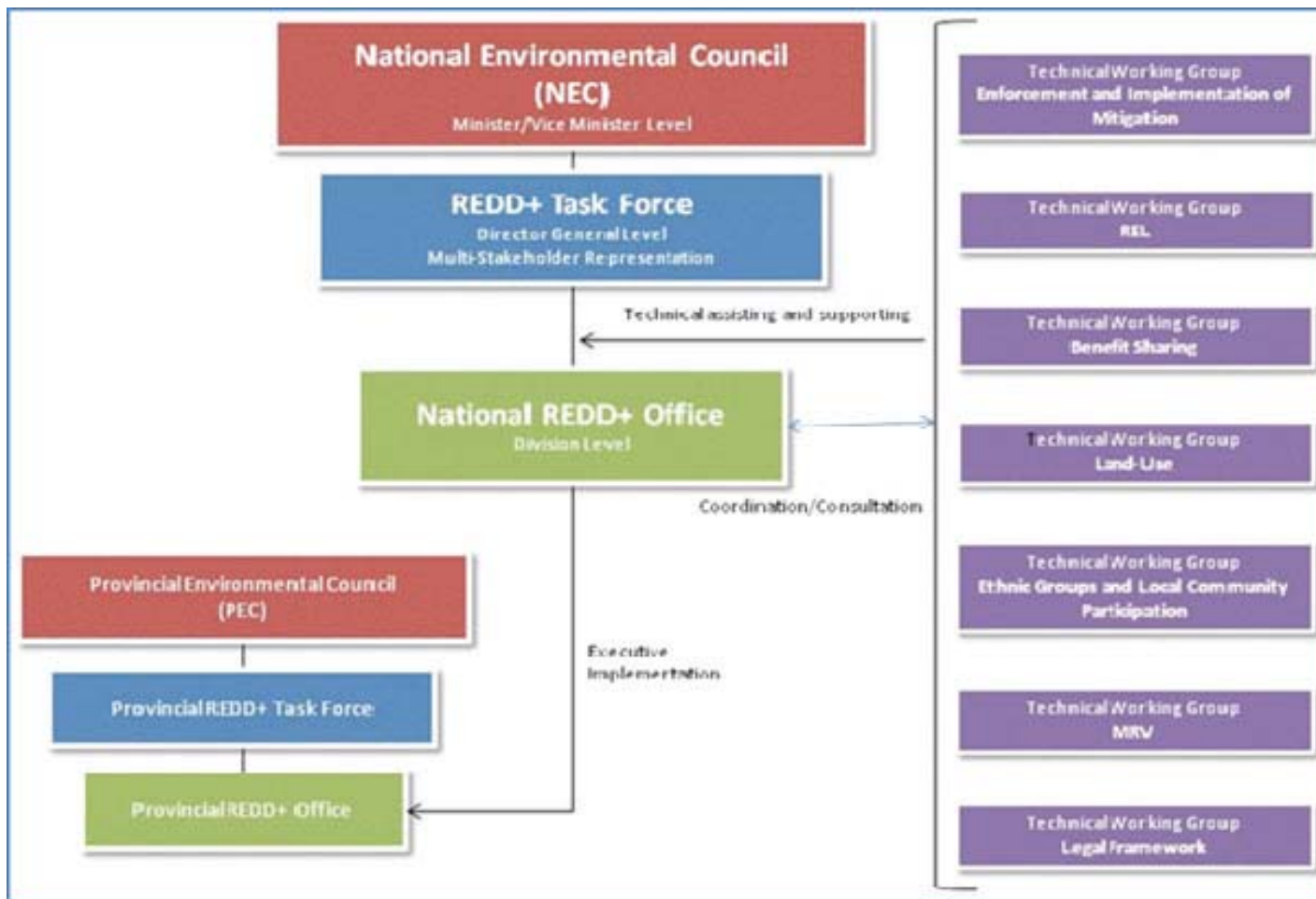
National contexts

Forest
resources

Forest
governance
and policy

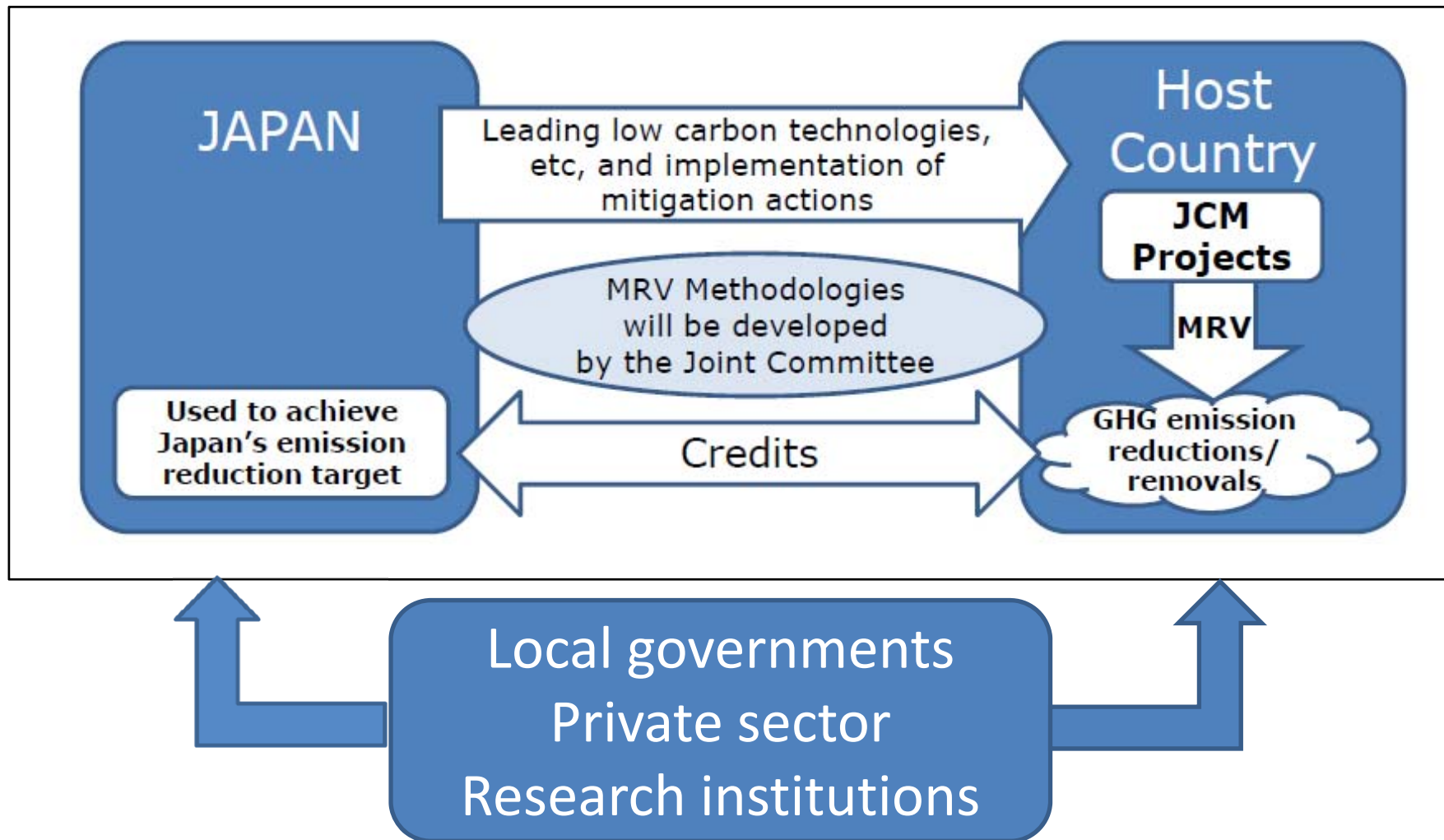
Drivers of
deforestation
and forest
degradation

Organisational framework for REDD+ in Lao PDR



Source: Department of Forestry (2012)

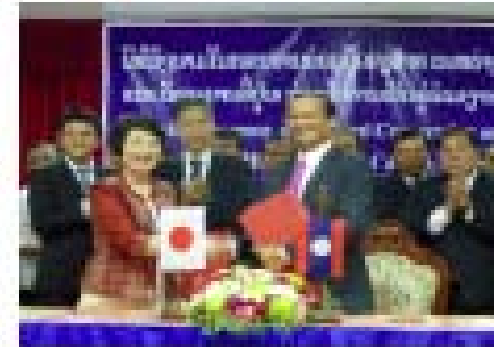
The Joint Crediting Mechanism (JCM)



Japan has signed the bilateral documents for the JCM with 11 countries: Mongolia, Bangladesh, Ethiopia, Kenya, Maldives, Viet Nam, **Lao PDR**, Indonesia, Costa Rica, Palau, Cambodia and Mexico

JCM in Lao PDR

- The Government of Lao PDR signed the bilateral documents for the JCM on **7 August, 2013**
- JCM has just started to support low carbon development in Lao PDR.
- Energy efficiency and renewables are the prime target sector
- REDD+ is expected as an activity under the JCM
- The REDD+ guideline for the JCM is developing since 2014



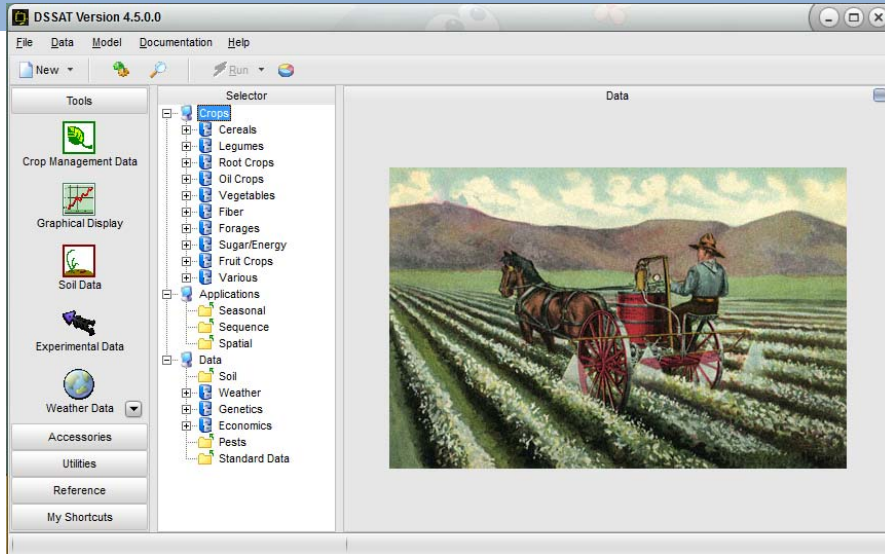
REDD+ study for the
JCM in Luang Prabang
Province in 2014
by MOEJ

V. IGES Research on Suitable Land Use Planning and Forest Conservation

The objectives of the research

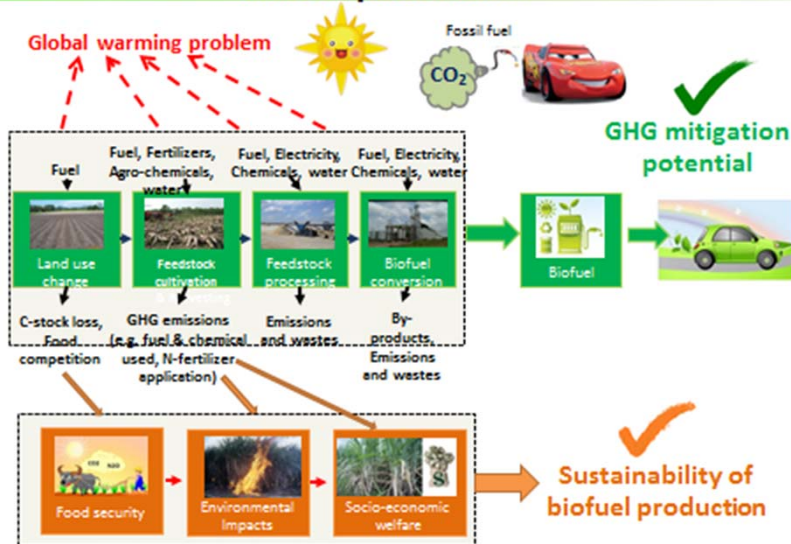
- To develop and apply a comprehensive evaluation methodology to assess land suitability for production of bioenergy feedstock and agricultural food crops, considering the national renewable energy policy, climate change, and socio-economic factors.
- To contribute to land use planning for bioenergy feedstock and agricultural food crop production and forest conservation

Assessment of crop yields by using DSSAT model



Lifecycle GHG emissions calculation of bio feedstock crop production and biofuel production

GHG mitigation potential and sustainability of biofuel production



Assessment of land use changes associated with multiple factors by applying GIS/RS

Equipment



Topography



Land use map



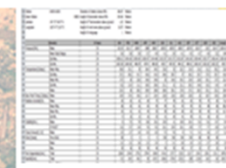
Soil map



Ortho photo



Satellite



Moisture regimes



GPS

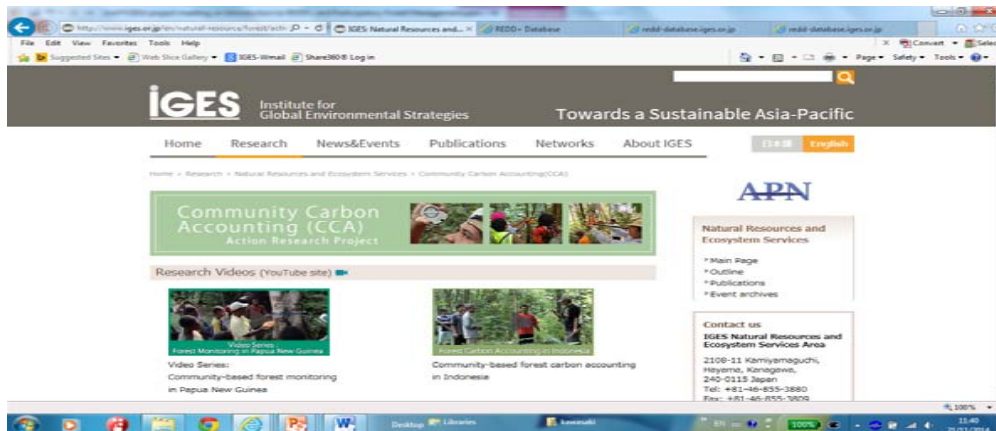
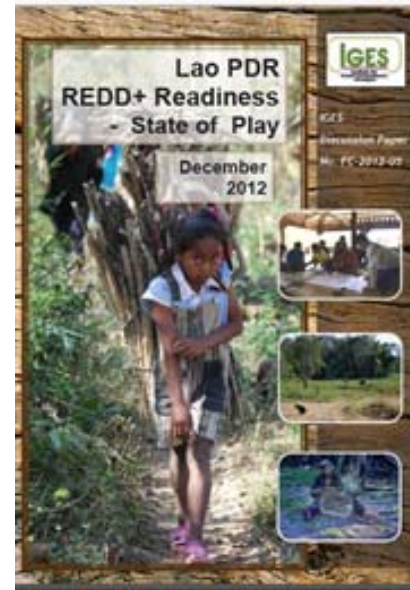
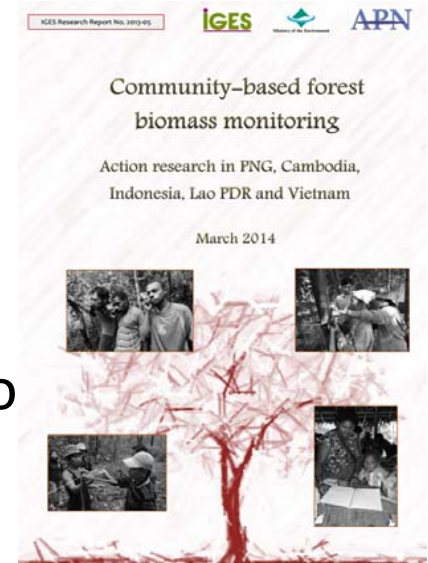
Assessment of role of forest communities in forest conservation and management



Work Plan in 2015

The main work plan will include:

- Driver of Deforestation
- Suitable Land Use Planning and Forest Conservation
- Participatory Forest Management Based REDD+
- REDD+ and JCM
-



IGES Action Research on Community Carbon Accounting Project

http://www.iges.or.jp/en/natural-resource/forest/activity_cca.html

Proposed Research Sites in Savannakhet Province

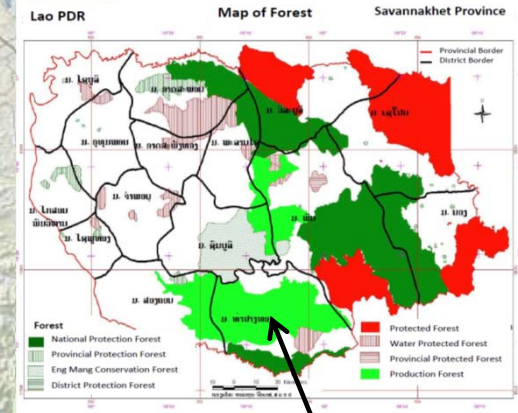
I. Phou Xang He National Biodiversity Conservation Area



Dong Phou Vieng National Biodiversity Conservation Area

II. Dong Sithuane Production Forest Area

III. Agricultural Crop Area in Xayburi District and Production Forest Area in Phin and Thapangthong Districts



Production Forest Area



Thank you very much