

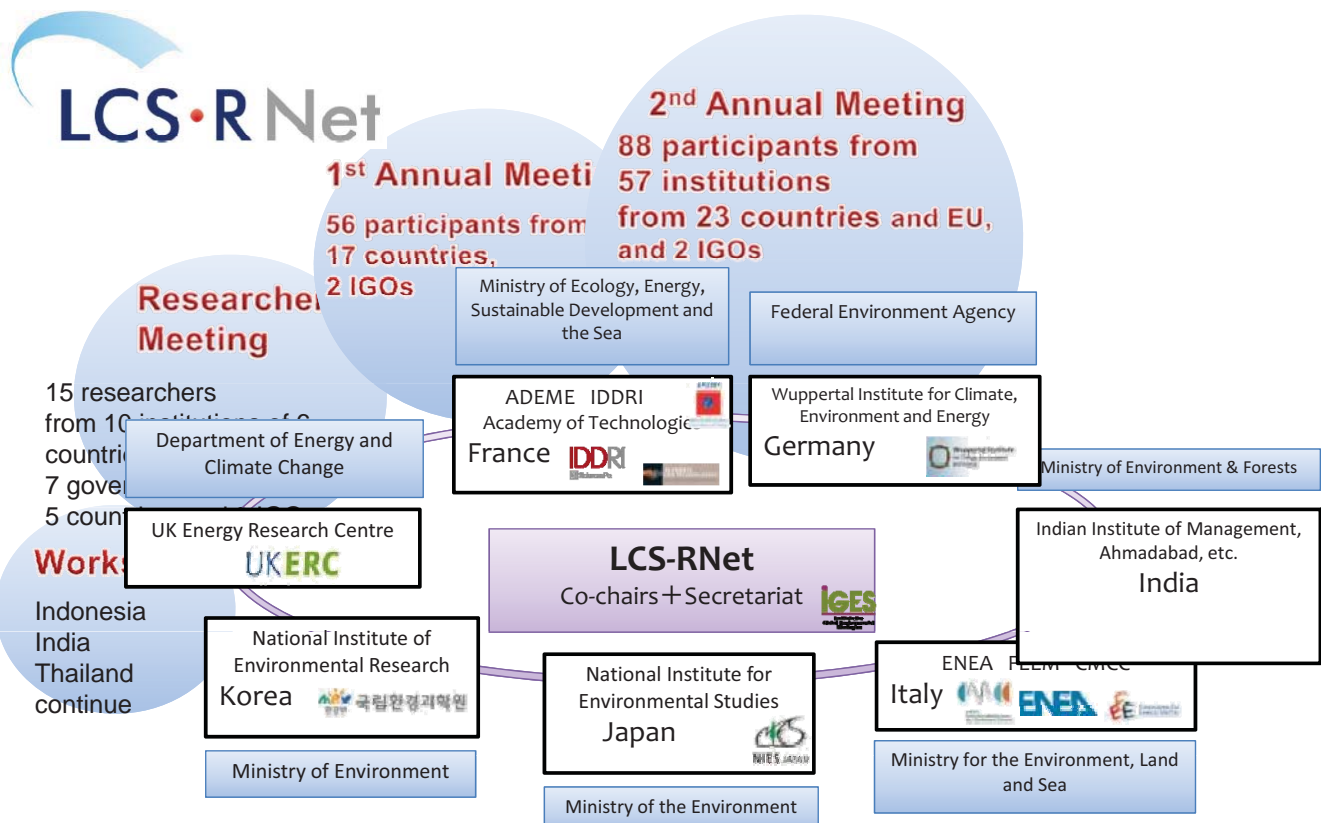
International Research Network for Low Carbon Societies



Set up with the initiative of G8 EMM to provide ;

- Platform for the LCS research
- Dialogues between researchers and various stakeholders
- Scientific input to international policy-making processes on climate change such as G8 and the UNFCCC

Shuzo Nishioka
Secretary General, LCS-RNet Secretariat, IGES
Side Event at AWGKP14 AWGLCA12
8 October 2010

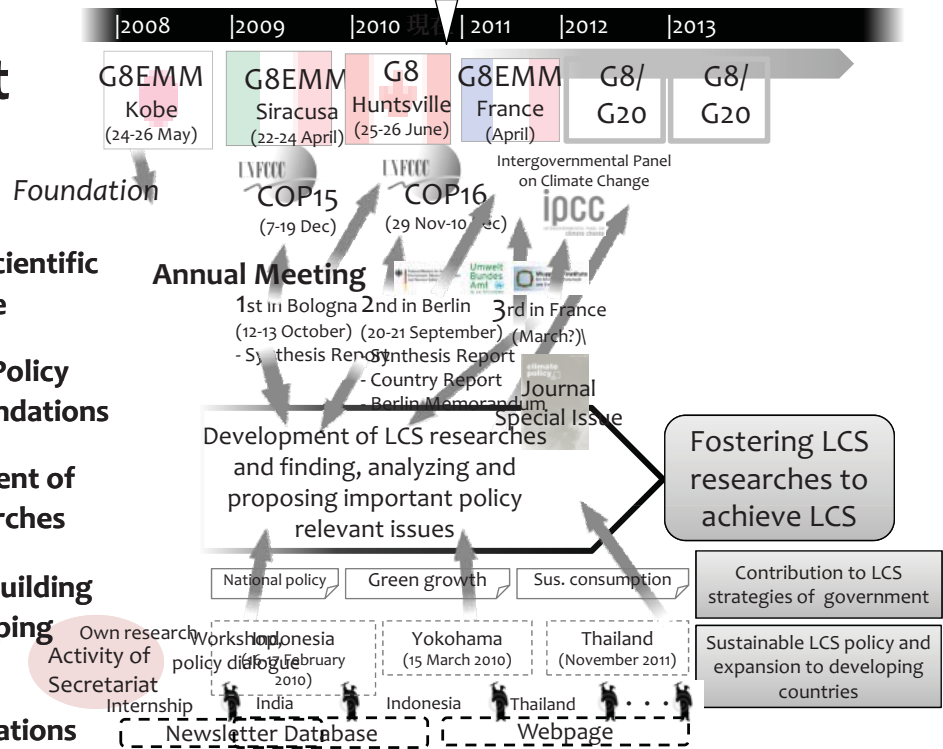


- Supported its foundation by G8 Environment Ministers Meeting.
- Research network to be a platform amongst researches, policy-making communities and stakeholders to realize low-carbon societies.
- 7 countries and 15 research institutes (currently)

LCS-RNet - Activities

LCS-RNet 5 year plan

1. Sharing scientific knowledge
2. Scientific Policy Recommendations
3. Development of LCS Researches
4. Capacity Building of Developing Countries
5. Public Relations



Second Annual Meeting Berlin, Germany September 20th - 21st 2010

Multi Level Policy for a Green Society

Hosted by

- The Federal Ministry for Environment, Nature Conservation and Nuclear Safety, Germany
 - The Federal Environment Agency Germany
- In cooperation with
- The Wuppertal Institute for Climate, Environment and Energy

Key findings

States of LCS

- After Copenhagen : Developed countries: facing difficulties to make real changes
 - Developing countries: start to tackle the LCS, Priority areas varied
- Energy demand and supply issue: (technology/ society behaviour issues)
- Need to address interlinkages amongst issues and actors
- More transparency in policy-making process required, e.g. trade-offs of options

Stakeholder movement

- Roles of sub-national, non-governmental level entities, e.g. Cities are important
- Who participate will frame issues

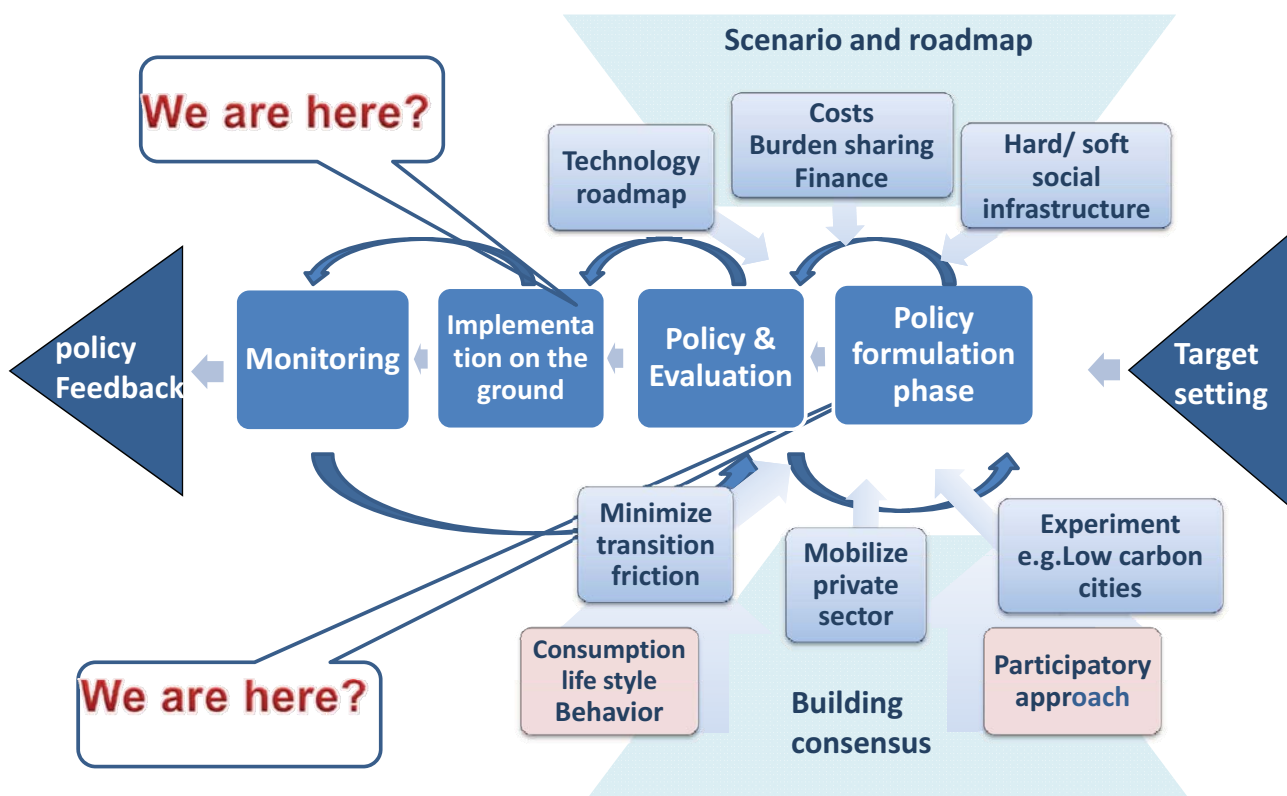
Transition and framing sustainability

- Governance for Transition, and new roles for government are sought
- Indicator to help PM to make a right decision

Role of science in transition

- Power and the weakness of the economic modelling
- Translator, change-maker as change agency, process organiser
- Networking is important to formulate holistic research on LCS

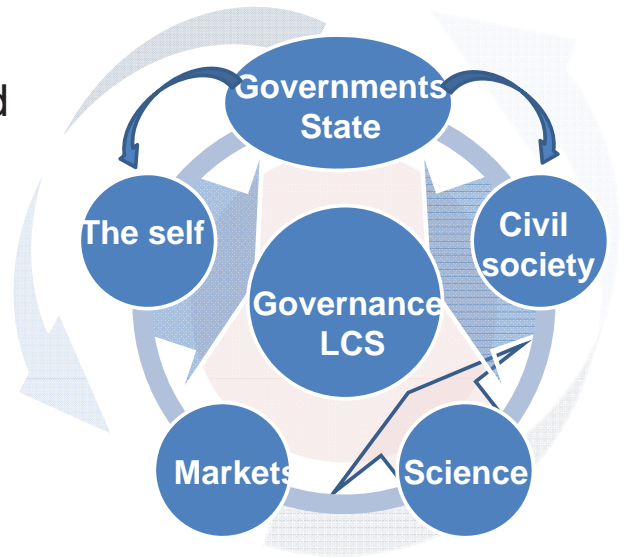
Formulation of LCS - To make a real progress



Multi-level Governance World towards LCS

□ Involves government's policy-making structure, science and civil societies and other stakeholders

- ✓ Who participate in the process,
- ✓ who have the power to
 - frame the issues,
 - set the objectives and
 - design/operationalise these forms of governance



□ Changing role of the state: from

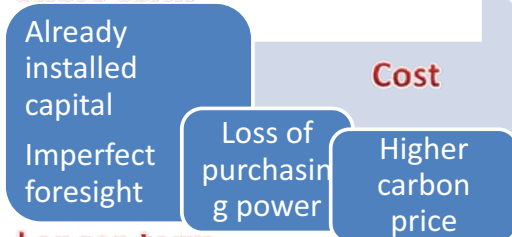


□ Role of Science is also changing

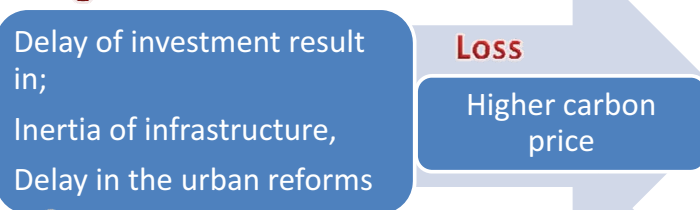
Macro-economic analysis on cost

Need to make understood that “short-term losses can be turned to gain by early investment for longer-term targets”.

Short-term



Longer-term

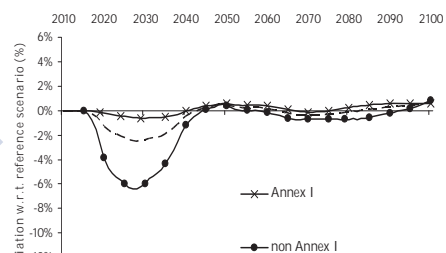
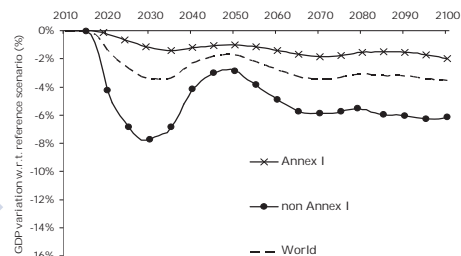


Or



Integration of short-term (Keynesian) and long-run (Neo-classical) analysis

Impact on GDP variation w.r.t. reference scenario (%)



Source: Jean-Charles Hourcade, Head of CIRED, France, Refer to Presentation titled "Issues behind the modelling of the 2nd best World".

Scenarios to Actions

Current situation since Copenhagen

Industrialized countries: More or less the same tools and priority areas

→ facing the difficulty to gain public support to achieve real progress

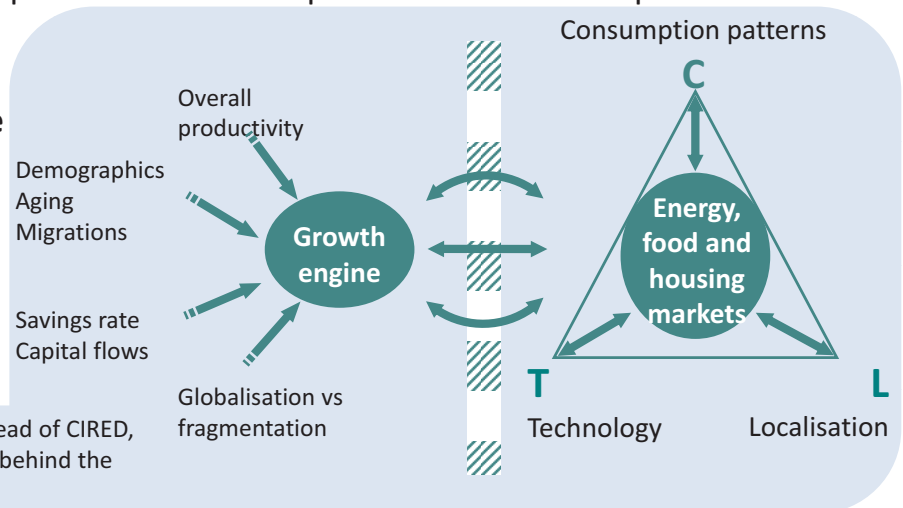
Developing countries: Showing stage, geographical and other characteristics their commitment

→ Priority areas varied depend on development

Modelling and various analysis required for better-coordination of top-down visions and policies and bottom-up actions

Need to show

“2nd best world” linkage with sub-optimality; such as labour market, localization of technologies, people’s preferences, etc.



Source: Jean-Charles Hourcade, Head of CIREAD, France, Presentation titled "Issues behind the modelling of « 2nd best World ».

Role of Science in Transition

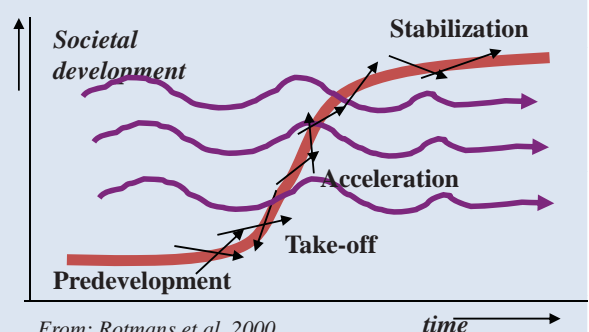
⇒ The world in Transition

- Ambiguous and uncertain, but also inevitable
- Policies and their making process need to be transparent
- Managing transitions = coordination, guidance, creating space

⇒ A quest for sustainability

- Framing sustainability challenge as transition
- Requires multi-, inter- and trans-disciplinary approaches
 - To explain complexity, interdependencies and trade-offs

Non-linear systemic change



From: Rotmans et al, 2000

Presentation titled "Transition governance for a Sustainable Low Carbon Society"
Derk Loorbach from Dutch Research Institute for Transitions, Erasmus University Rotterdam

Role of science → translator, and change-maker

Thank you very much.

<http://lcs-rnet.org>